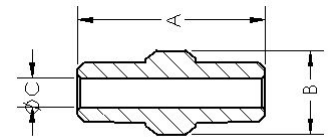
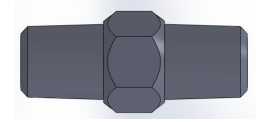


## DATOS GENERALES DE CONEXIONES PARA ALTA PRESION MCA.INVAL.

### NIPLE MISMA MEDIDA AMBOS LADOS

DIAM. LONG. HEX. ORIF. PRESION TRABAJO PSI.

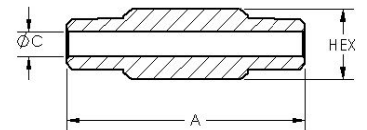
1/4	1 5/8	5/8	0.281	10000
3/8	1 5/8	3/4	0.375	9500
1/2	2	7/8	0.469	9000
3/4	2	1 1/8	0.625	8500



### NIPLE LARGO EXAGONAL

DIAM. LONG. HEX. ORIF. PRESION TRABAJO PSI.

1/4	2	5/8	0.281	10000
1/4	2 1/2	5/8	0.281	10000
1/4	3	5/8	0.281	10000
1/4	4	5/8	0.281	10000
3/8	2	3/4	0.312	9000
3/8	2 1/2	3/4	0.312	9000
3/8	3	3/4	0.312	9000
3/8	4	3/4	0.312	9000
1/2	3	7/8	0.437	9000
1/2	4	7/8	0.437	9000
3/4	3	1 1/8	0.625	8500
3/4	4	1 1/8	0.625	8500



### NIPLES REDUCIDOS MACHO MACHO

MACHO MACHO A B C PRESION TRABAJO PSI

1/4	1/8	1 5/16	5/8	0.187	12000
3/8	1/4	1 1/2	3/4	0.281	10000
1/2	1/4	1 3/4	7/8	0.281	10000
1/2	3/8	1 3/4	7/8	0.375	9000
3/4	3/8	1 3/4	1 1/8	0.375	9000
3/4	1/2	1 7/8	1 1/8	0.437	10000

